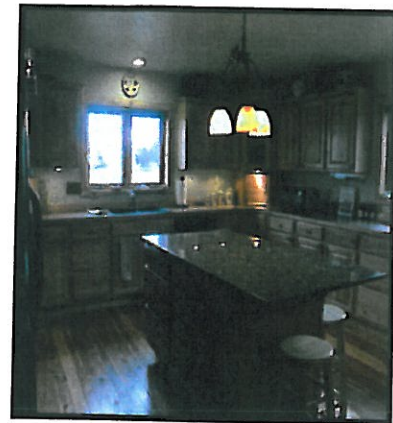


THE BIGGERSTAFF COMPANY

REAL ESTATE
P.O. BOX 160819 - 18 MEADOW VILLAGE DR.
BIG SKY, MT 59716
(406) 995-2454 (406) 995-4858 FAX

3030 UPPER RAINBOW ROAD RAINBOW ACRES SUBDIVISION



Located just 2 miles south of Four Corners, this 2894+/- sq.ft. custom home sits on 1+/- acre facing west to the Gallatin River. 4BR/3B w/circular sawn fir floors, carpeted bedrooms, granite rock fireplace and window coverings. Large open kitchen offers hickory cabinets, granite island, & side by side refrigerator. Front loading washer/dryer in laundry room. Log accents surround this homes exterior and three decks.

\$ 375,000.00 UF

Estimated Fees

Property Taxes 2009	\$ 2207.32yr
Water:	Well
Sewer:	Septic

MLS # 164956

Listing Agent

Sharon Brekhus
Sharon Cell: 406-580-6085
sharon@biggerstaffmt.com

www.biggerstaffmt.com

All information is from sources deemed reliable. The Biggerstaff Company, Seller and Seller's Agent make no guarantee or promise of this information. Independent investigation by purchaser recommended.